



KING'S LEADERSHIP  
ACADEMY HAWTHORNES

# OUR SCHOOL DAY & MAP OF SCHOOL

SEE MAP OVERLEAF

## MONDAY TO WEDNESDAY

8:17	School Starts / Line ups
8:20 - 9.00	Dock 'ASPIRE' session / Assembly / Lesson 0
9:00 -10:00	Lesson 1
10:00 -11:00	Lesson 2
11:00 -11:15	Break
11:20 -12:15	Lesson 3
12:15 -1:10	Lesson 4
1:10 - 1:45	Lunch
1:50 - 2:50	Lesson 5
2:50	End of school day

## EXTENDED SCHOOL DAY THURSDAY

On Thursdays, the school day is extended by one period to allow for our enrichment programme. Year 7 will follow a carousel of activities.

2:50 - 3:45	Lesson 6
-------------	----------

## FRIDAY EARLY FINISH FOR STUDENTS AND STAFF TRAINING

In line with the other schools in the Great Schools Trust, we finish earlier at 1.50pm on a Friday to allow staff to take part in professional development. The day is as follows:

8:17	School starts / Line ups
8:20 - 9.00	Dock 'ASPIRE' session / Assembly / Lesson 0
9:00 - 10:00	Lesson 1
10:00 -10:15	Break
10:20 -11:15	Period 2
11:15 -12:15	Lesson 3
12:15 -12:50	Lunch
12:55 -1:55	Lesson 4
1:55	End of school day

[WWW.KINGSHAWTHORNES.COM](http://WWW.KINGSHAWTHORNES.COM)

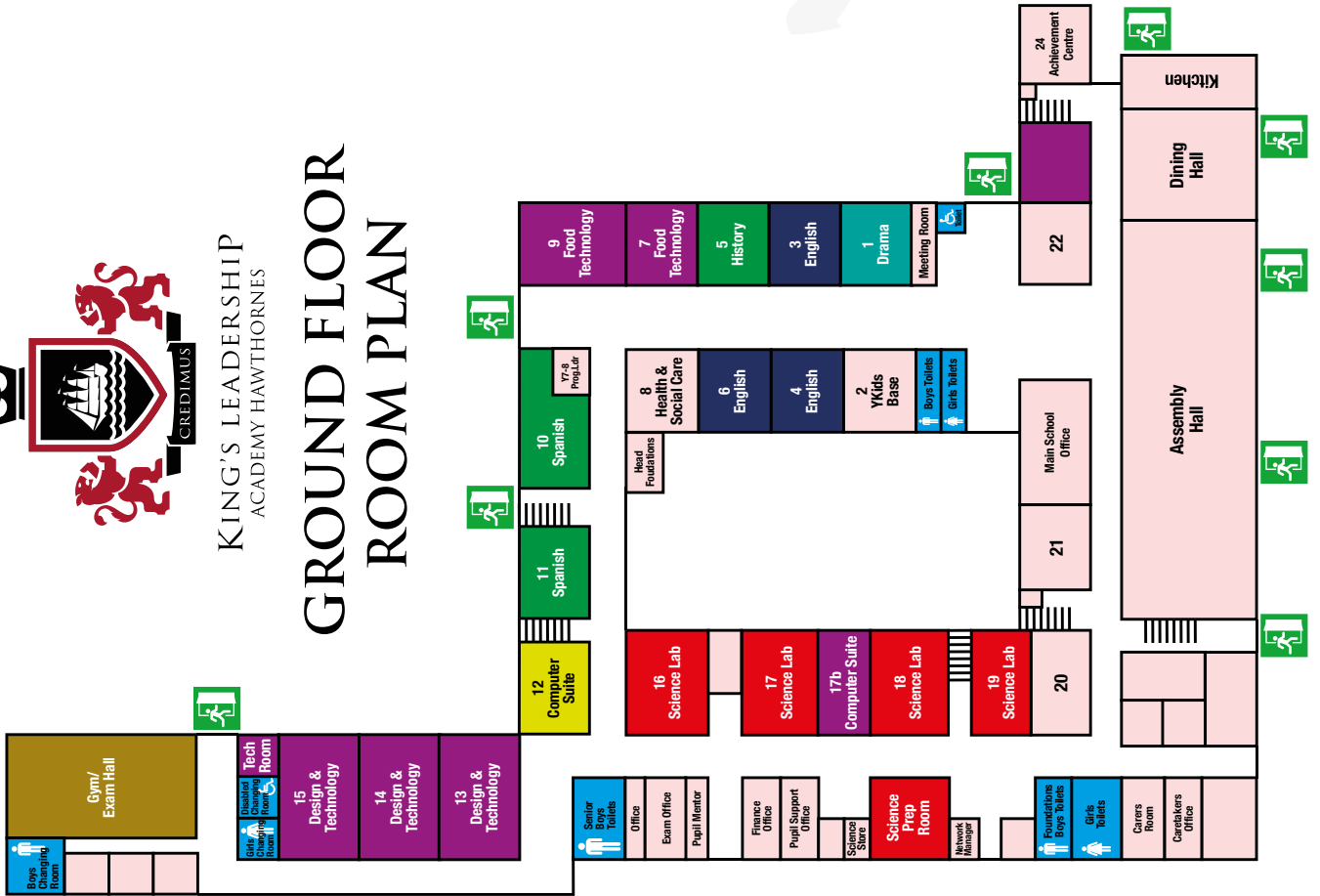
King's Leadership Academy Hawthornes

Fernhill Road, Bootle, Merseyside L20 6AQ | Telephone: 0151 922 3798

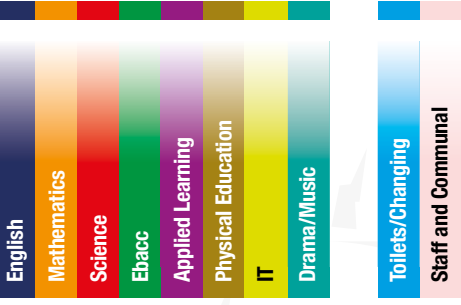


KING'S LEADERSHIP  
ACADEMY HAWTHORNES

# GROUND FLOOR ROOM PLAN



# KEY



# FIRST FLOOR ROOM PLAN

